

Do YOU RAEE?

DO YOU RAEE?
FIND OUT WHAT RAEE
IS AND HOW TO MANAGE
IT CORRECTLY.

WHAT DOES RAEE MEAN?

RAEE stands for **Rifiuti di Apparecchiature Elettriche ed Elettroniche** (RAEE = WEEE - Waste Electrical and Electronic Equipment), i.e. all appliances you want to get rid of, and that depend on electricity, batteries or accumulators. They are everyday objects that require a special procedure to be handled properly.

LARGE HOUSEHOLD APPLIANCES

Refrigerators, washing machines, dishwashers, electric ovens, air conditioners, dryers



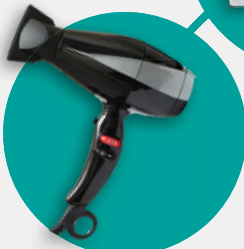
IT EQUIPMENT AND TELECOMMUNICATIONS

Computers, laptops, printers, routers, landlines, mobile phones, modems



SMALL HOUSEHOLD APPLIANCES

Vacuum cleaners, blenders, irons, hair-dryers, toasters, scales, food processors



WHAT IS RAEE?

In general, any object no longer serviceable powered by a cable or a battery is a RAEE.

LIGHTING

Energy-saving bulbs, neon, LED, ceiling lights



CONSUMER EQUIPMENT

TVs, radios, video cameras, video game consoles, DVD or Blu-ray players



ELECTRIC AND ELECTRONIC MUSICAL INSTRUMENTS

Electronic keyboards, amplifiers, hi-fi systems, headphones and earphones, MP3 players, connection cables



MONITORING AND CONTROL EQUIPMENT

Thermostats, sensors, alarm systems



ELECTRIC TOYS AND HOBBIES

Radio-controlled cars, drones, electronic games



HOW SHOULD RAEE BE MANAGED?

RAEE must not be disposed of in unsorted waste, because it contains:

- **Pollutants**
- **Recoverable essential materials** (copper, aluminium, lithium, etc.)

CORRECT RAEE MANAGEMENT METHODS

TAKE IT TO A COLLECTION CENTRE

Almost all Municipalities have a collection centre where RAEE can be delivered free of charge. To find your nearest collection centre, go to:

cdcraee.it/centri-di-raccolta-comunali

"1 FOR 1" COLLECTION

When you purchase a new appliance, including online, the seller is legally obliged to collect the equivalent old one free of charge.

REQUEST HOME COLLECTION

Where applicable, collection by appointment may be requested in the case of large household appliances such as refrigerators, washing machines, dryers, etc.

"1 AGAINST 0" COLLECTION IN STORES

In stores with a surface area greater than 400 square metres, it is possible to deliver small RAEE (with a maximum size of 25 cm, such as an old smartphone) free of charge, even without having to buy anything.

WHAT YOU MUST NOT DO UNDER ANY CIRCUMSTANCES

- ✗ Throw it away with unsorted waste
- ✗ Leave it in the cellar or near the bins
- ✗ Dispose of it with other waste subject to separate collection
- ✗ Dismantling it

COLLECT AND RECYCLE RAEE CORRECTLY IS VERY IMPORTANT BECAUSE

- ✓ It helps to avoid soil and water pollution
- ✓ Helps recover up to 90% of the materials they are composed of
- ✓ It allows you to comply with environmental legislation